



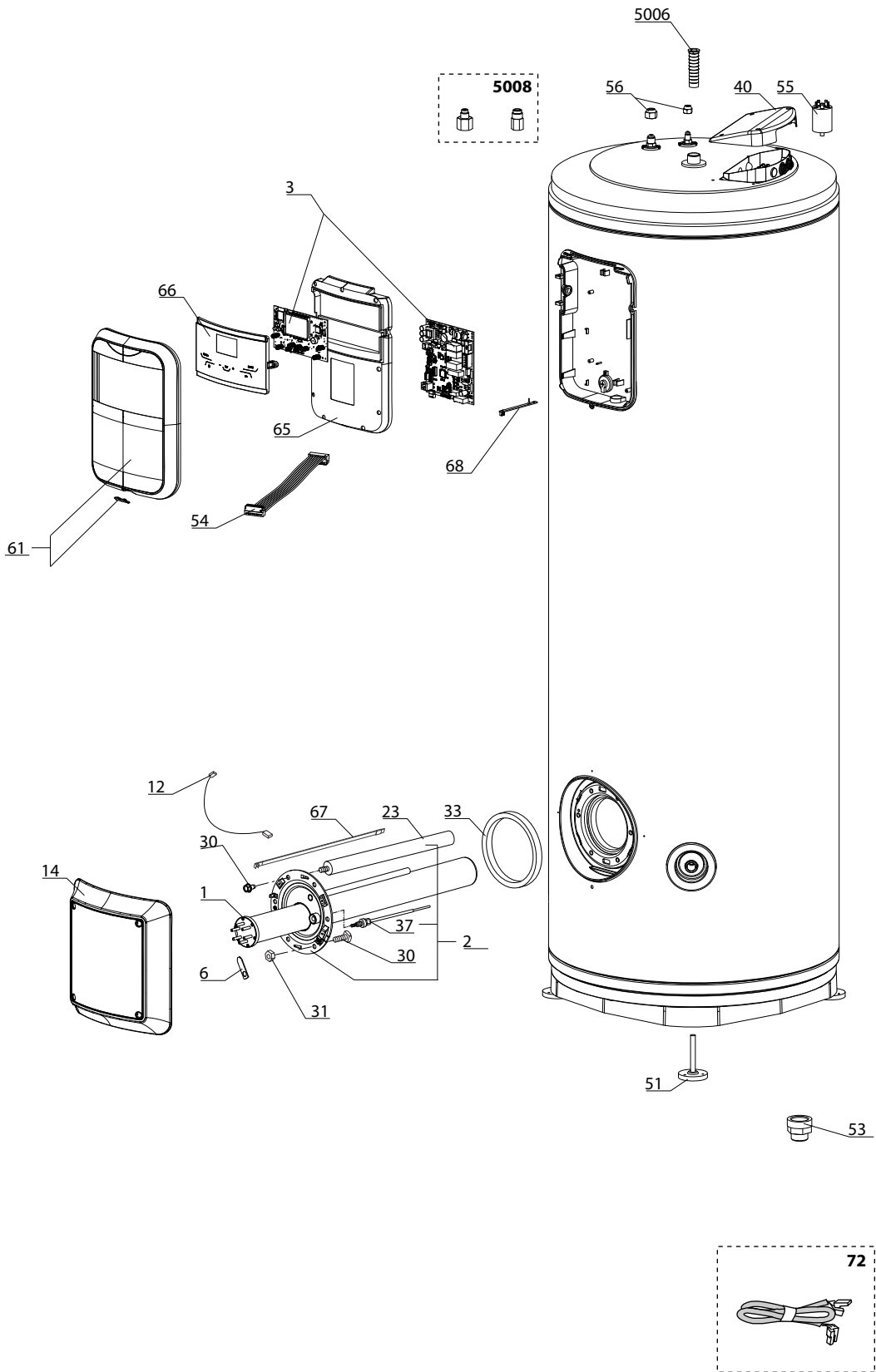
SPARE PARTS EXPLODED VIEW  
HEAT PUMPS

Model

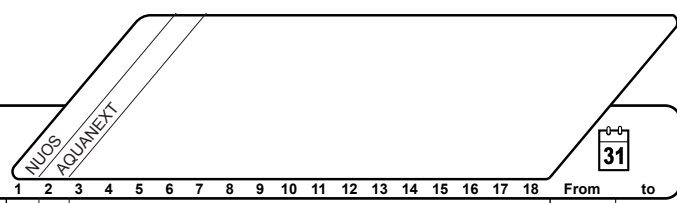
**NUOS/AQUANEXT SPLIT INV TANK FS**

R8218403-04 - 29/09/2021

1	3069751	NUOS SPLIT INVERTER TANK 270 FS	07-2019	-
2	3069754	AQUANEXT SPLIT INV TANK 270 FS	07-2019	-
Col	Reference	Model type	Begin	End



Ⓞ→	Description	Manf. Pt. N	Type	<div style="float: right; border: 1px solid black; padding: 2px; text-align: center;">             31           </div>																		
				1	2	3	4	5	6	7	8	9	10	11	12	13	14	15	16	17	18	From
0001	CERAMIC RESISTANCE 1000+1500W	60001714		•	•																	
0002	FLANGE WITH ANODES	60003286		•	•																	
0003	P.C.B. (MAIN+DISPLAY)	60003362		•	•																	
	P.C.B. (MAIN+DISPLAY)	60003363		•	•																	
0006	FIXING BRACKET	60072531		•	•																	
0012	CABLE THERMISTOR TEMPERATURE SENSOR	60003281		•	•																	
0014	FLANGE COVER	65154811		•	•																	
0023	ANODE D:25,5 L:180 M5-M8	977127-01		•	•																	
0030	SCREW M8X14 (6 PCES)	60000681		•	•																	
0033	FLANGE GASKET	60003285		•	•																	
0037	ANODE (PROTECH)	65111197		•	•																	
0040	BOX COVER	60001812		•	•																	
0051	ADJUSTABLE FOOT	65111175		•	•																	
0053	DIELECTRIC JOINT 3/4	60003265		•	•																	
0054	DISPLAY WIRING	60003266		•	•																	
0055	ANTIJAMMING FILTER KIT	60003407		•	•																	
0056	NUTS KIT	60003370		•	•																	
0061	BOX COVER	60003269		•	•																	
	BOX COVER	60003270		•	•																	
0065	PROTECTION	60003271		•	•																	
0066	TRIM	60003262		•	•																	
	TRIM	60003263		•	•																	
0067	SENSOR	65102543		•	•																	
0068	PROBE	60002537		•	•																	
0072	CABLE (E-BUS)	60003280		•	•																	
	EARTH CABLE (FILTER)	60003279		•	•																	
	EARTH CABLE (P.C.B.)	60003257		•	•																	
	POWER CABLE (FILTER)	60003278		•	•																	
	WIRING (FLANGE - P.C.B.)	60003258		•	•																	
	WIRING (P.C.B. - SG1, SG2)	60003283		•	•																	
	WIRING POWER	60003282		•	•																	
<b>5000</b>	<b>ACCESSORIES</b>																					
5006	INSERT (PLASTIC) 3/4	60001255		•	•																	
5008	FITTINGS FOR GAS CONNECTIONS	65116482		•	•																	



## LIST OF THE ABBREVIATIONS

HW .....	: Hot water.
CW .....	: Cold water.
C .....	: Ceramic resistance (normal heating).
Ca .....	: Ceramic resistance (accelerated heating)
TP .....	: Immersion heater.
1F .....	: With fittings.
2F .....	: Without fittings.
3F .....	: With fittings and another outlet connection.
AMI .....	: With mixing valve.
SMI .....	: Without mixing valve.
PUISS .....	: Power of th appliance.
PN .....	: Appliance with normal pression.
LP .....	: Appliance with low pression.
PV .....	: Appliance with variable power.
PF .....	: Appliance with fixed power.

## IDENTIFICATION PLATE

### SERIAL NUMBER

<b>9 Characters :</b>	07 91 00301 (from 01/77 to 12/92)		
	Month of manufacture	Sequential number	
	Year of manufacture		
<b>10 Characters :</b>	95 01 065004 (from 01/93 to 06/95)		
	Year of manufacture	Sequential number	Month of manufacture
<b>OU</b>			
<b>10 Characters :</b>	01 95 065004 (from 07/95)		
	Month of manufacture	Sequential number	Year of manufacture
<b>12 Characters :</b>	924 2 3 134 0115		
	Product reference	Sequential number	Manufacturing day
	Year of manufacture		
<b>15 ou 16 Characters :</b>	(0)03 070 0001 893077 (from 01/97 to 01/05)		
	Year of manufacture	Product reference	
	Day of manufacture	Sequential number	
<b>OU</b>			
<b>16 Characters :</b>	05 070 0001 0000000 (from 02/05)		
	Year of manufacture	Product reference	
	Day of manufacture	Sequential number	
<b>17 Characters :</b>	07 070 00315 3070107		
	Year of manufacture	Product reference	Sequential number
			Manufacturing day (70)
<b>21 Characters :</b>	3000115 XX 08115 0000001		
	Product reference	Sequential number	
			Year (08) / Manufacturing day (115)
<b>22 Characters :</b>	3000115 XX 070416 0000001		
	Product reference	Sequential number	
			Year (07) / Month (04) / Manufacturing day (16)